



OVERVIEW

BY way of this notice, notification is given that on June 1st 2019 Viterra will commence demolition operations, under Vancouver Fraser Port Authority (VFPA) permit, of Viterra's PAC3 Elevator located at 1803 Stewart Street, Vancouver British Columbia.

The PAC3 facility was originally built as Vancouver Elevator No. 1 in 1918 and sat dormant until 1923 when title was transferred to the Vancouver Harbour Commissioners. PAC3 was permanently shut down in 2010 as a result of structural deterioration and increasing operational costs.

PROJECT DETAILS

The PAC3 project includes the following tasks:

- Hazardous materials abatement,
- Demolition and removal of 42 grain silos (33 meters tall) with associated concrete bins, a below ground dumping pit, and conveyor system,
- Demolition and removal of the No.3 Workhouse,
- Demolition and removal of the No.2 Track Shed and Replacement of Rail Tracks, and
- Removal of an existing Underground Heating Oil Tank.

Decommissioning works will start with the removal of hazardous materials. Materials will be collected in regulatory compliant containers, sealed and labelled and stored for road transport.

Cranes will be used to remove mechanical equipment from the roof for transport to the recycling or waste management facilities.

Demolition of the concrete silos will be done using long reach equipment fitted with concrete crushers. Crushed material will fall inside the silo structure to the basement where the material will be sorted and hauled to the appropriate recycling facility.

PROJECT MITIGATION MEASURES

Air emissions will be continuously monitored using a "Microdust Pro" which provides real time suspended particulate readings.

Dust will be controlled through misting techniques as required throughout the demolition period. All water will be captured and treated using on-site water filtration systems prior to disposal.

Construction lighting will be limited to ensure entrance and exits are laminated. Any external lighting will be shrouded and directed toward the work space. Working hours will comply with VFPA guidelines.

Noise will be controlled by ensuring activities related to the Project are conducted between Monday to Saturday during the hours of 7:00am to 8:00pm. No construction or physical activities will occur on Sundays or holidays.

PROJECT DURATION

The project will be initiated in June 2019 with duration of 11 months, completion is scheduled for May 2020.

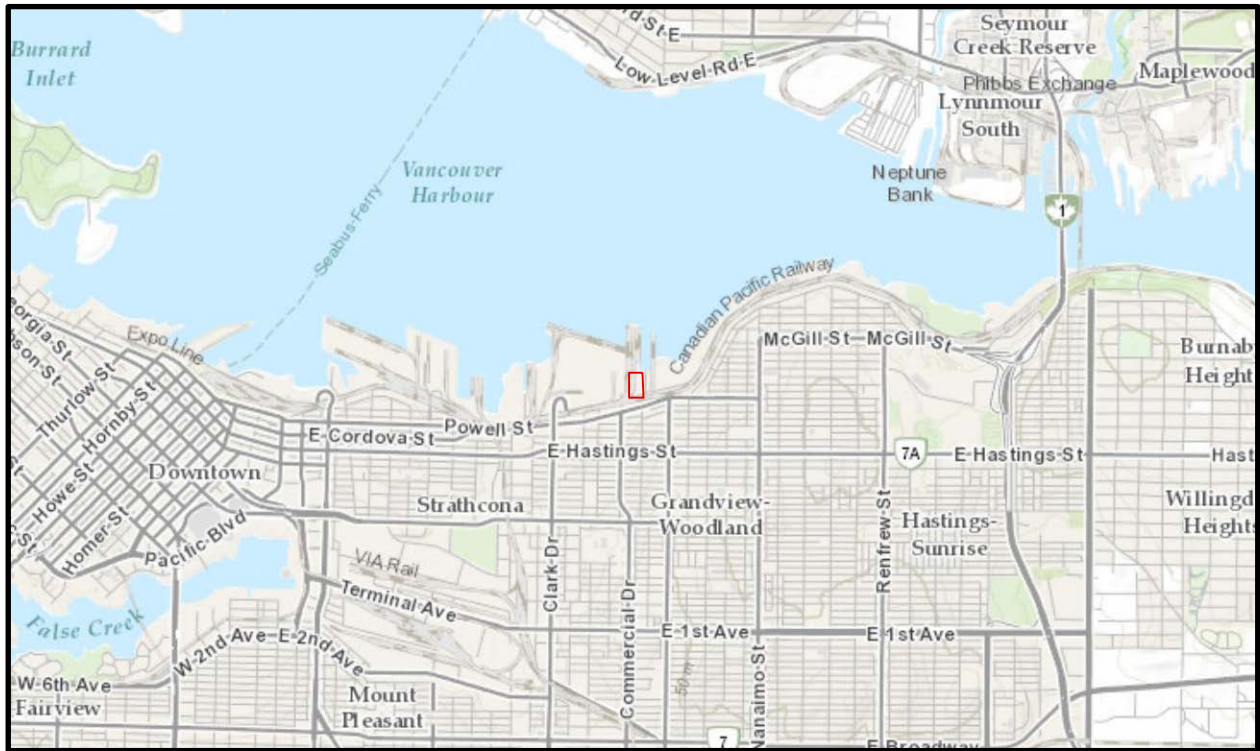
INFORMATION

For general information and project updates, please visit the Viterra Project Website page at www.viterra.com

Any questions or concerns may be directed to the Viterra project manager at michael.edmonds@viterra.com

Media may direct inquiries to Viterra's communication manager at Peter.Flengeris@viterra.com

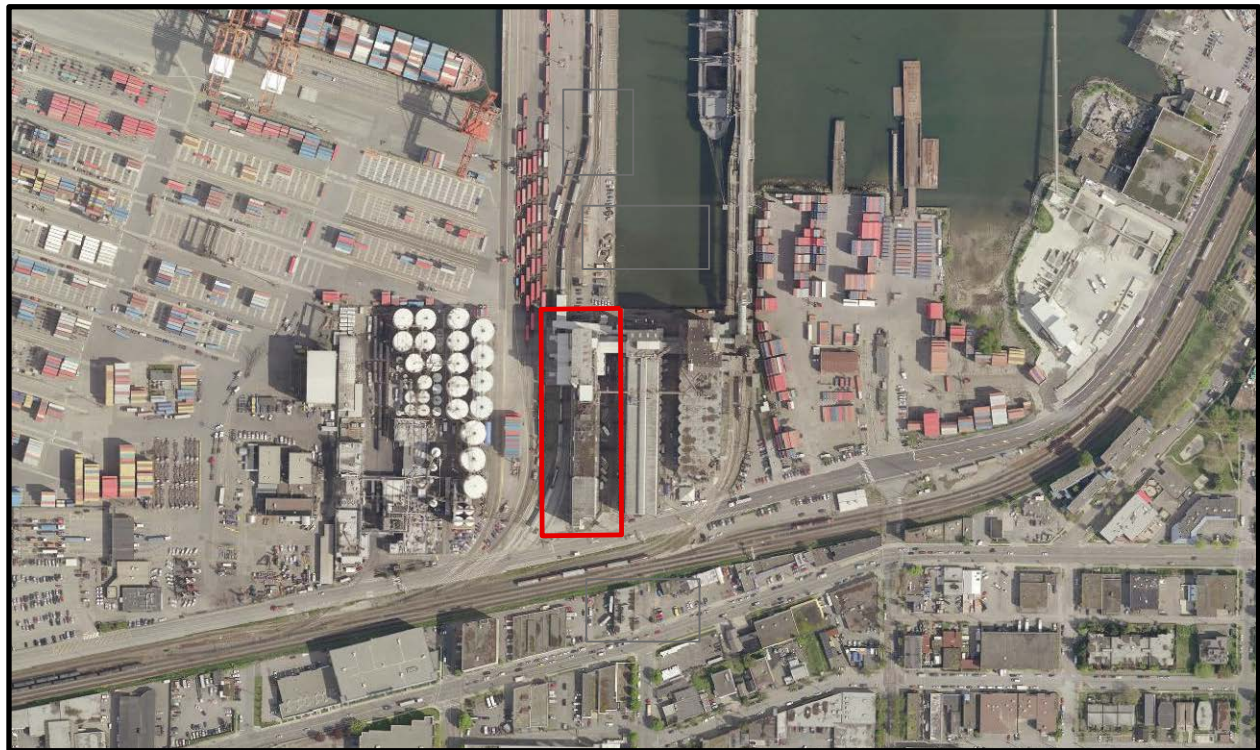
For questions around the port authority's permitting process contact the Community Feedback Line at (604) 665-9004 or community.feedback@portvancouver.com




 Site Location

Topographic Map

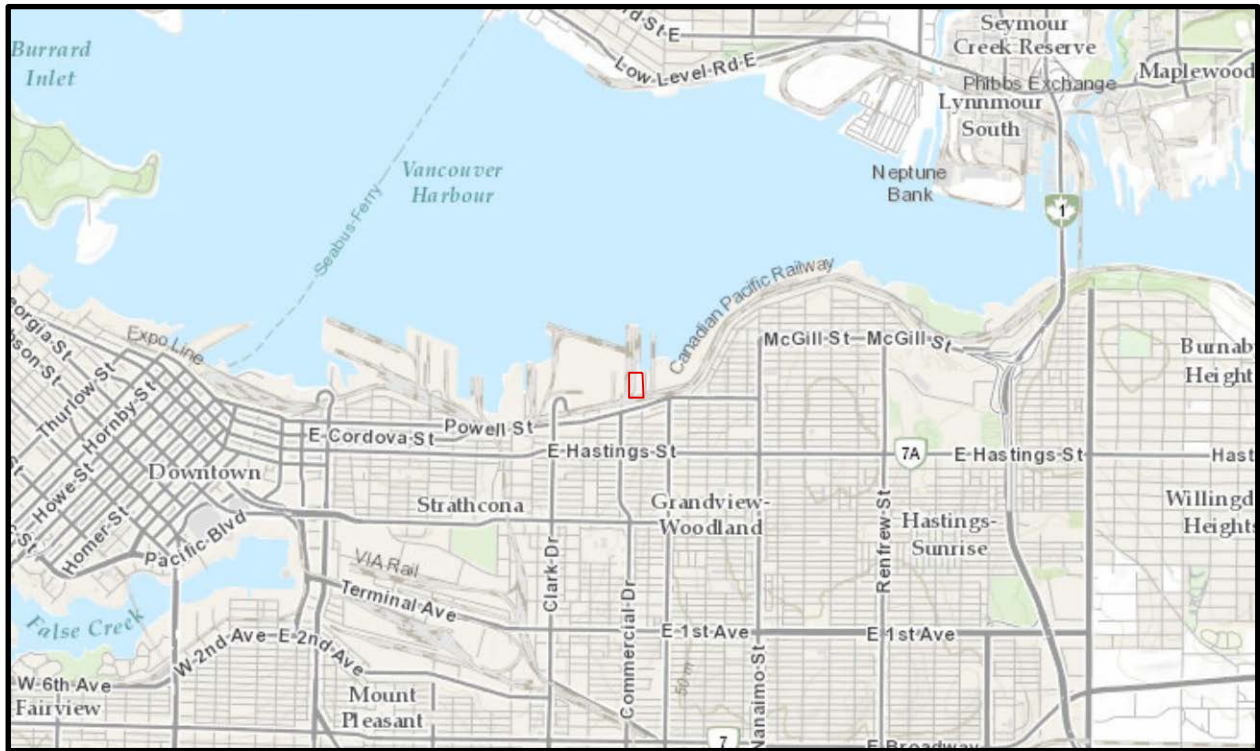
Source: ESRI Topographic Base map



 Site Location

Aerial View

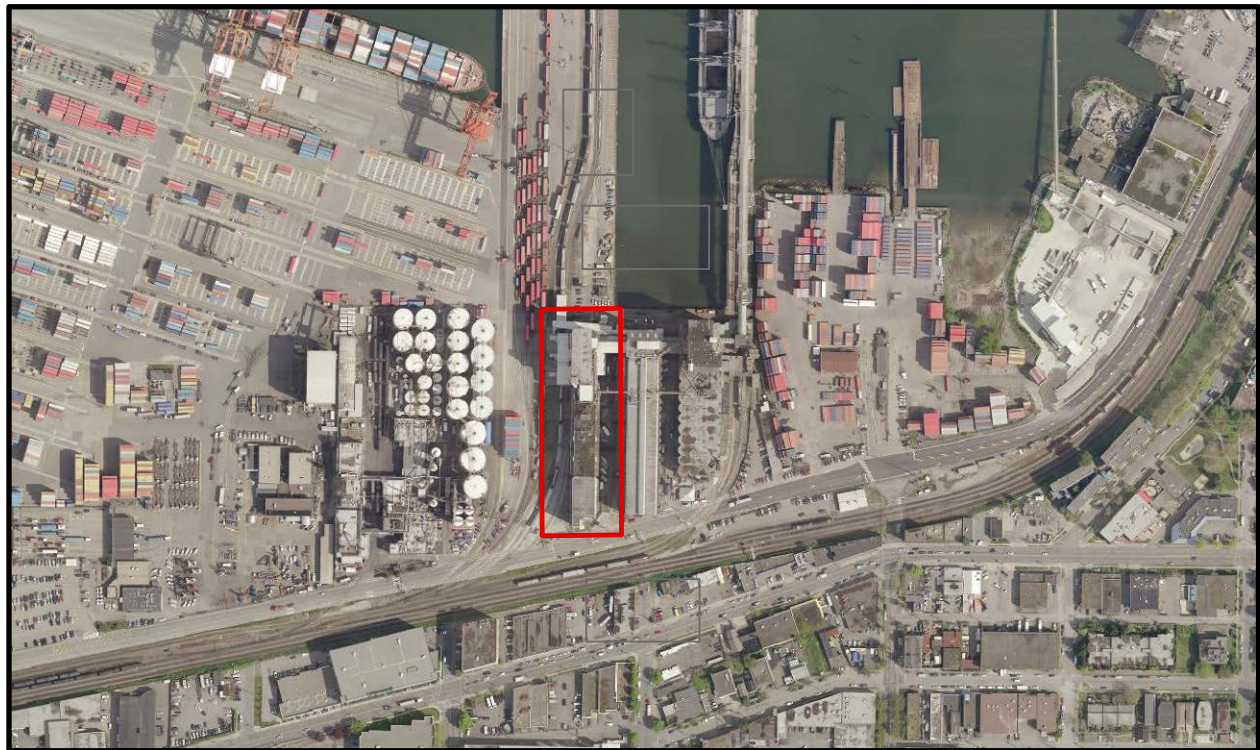
Source: ESRI World Imagery Service




 Site Location

Topographic Map

Source: ESRI Topographic Base map



 Site Location

Aerial View

Source: ESRI World Imagery Service